



# Crime and Disorder Scrutiny Panel

Wed 22 Sep  
2021  
6.30 pm

Council Chamber  
Redditch Town Hall

**REDDITCH** BOROUGH COUNCIL

*making  
a  
difference*

[www.redditchbc.gov.uk](http://www.redditchbc.gov.uk)

**If you have any queries on this Agenda please contact  
Jo Gresham**

**Town Hall, Walter Stranz Square, Redditch, B98 8AH  
Tel: (01527) 64252 (Ext. 3031)  
e.mail : [joanne.gresham@bromsgroveandredditch.gov.uk](mailto:joanne.gresham@bromsgroveandredditch.gov.uk)**

## **GUIDANCE ON FACE-TO-FACE MEETINGS**

---

**Due to the current Covid-19 pandemic Redditch Borough Council will be applying social distancing arrangements for holding face-to-face meetings.**

**Please note that this is a public meeting and is open to the public to attend**

**If you have any questions regarding the agenda or attached papers, please do not hesitate to contact the officer named above.**

### **GUIDANCE FOR ELECTED MEMBERS ATTENDING MEETINGS IN PERSON**

In advance of the Committee meeting, Members are strongly encouraged to consider taking a lateral flow test, which can be obtained from the NHS website. Should the test be positive for Covid-19 then the Member must not attend the Committee meeting, should provide their apologies to the Democratic Services team and should self-isolate in accordance with national rules.

Members and officers are strongly encouraged to wear face masks during the Crime and Disorder Scrutiny Panel meeting, unless exempt. Face masks should only be removed temporarily if the Councillor or officer is speaking or if s/he requires a sip of water and should be reapplied as soon as possible. As Councillors may remove their masks from time to time during the meeting, seating will be placed two metres apart, in line with social distancing measures to protect meeting participants.

Hand sanitiser will be provided for Members to use throughout the meeting.

The meeting venue will be fully ventilated, and Members and officers may need to consider wearing appropriate clothing in order to remain comfortable during proceedings.

### **PUBLIC ATTENDANCE AT MEETINGS**

Members of the public will be able to access the meeting if they wish to do so. However, due to social distancing requirements to ensure the safety of participants during the Covid-19 pandemic, there will be limited capacity and members of the public will be allowed access on a first come, first served basis. Members of the public in attendance are strongly encouraged to wear face masks, to use the hand sanitiser that will be provided and will be required to sit in a socially distance manner at the meetings. It should be noted that members of the public who choose to attend in person do so at their own risk.

In line with Government guidelines, any member of the public who has received a positive result in a Covid-19 test on the day of a meeting must not attend in person and must self-isolate in accordance with the national rules.

**Notes:**

**Although this is a public meeting, there are circumstances when Council might have to move into closed session to consider exempt or confidential information. For agenda items that are exempt, the public are excluded.**



# Crime and Disorder Scrutiny

Wednesday, 22nd September,  
2021

6.30 pm

Council Chamber

## Agenda

### Membership:

Cllrs:	Jennifer Wheeler (Chair)	Lucy Harrison Ann Isherwood
	Imran Altaf	
	Joanne Beecham	

**1.** Apologies and named substitutes

**2.** Declarations of interest and of Party Whip

To invite Councillors to declare any Disclosable Pecuniary Interests and / or Other Disclosable Interests they may have in items on the agenda, and to confirm the nature of those interests, and any Party Whip.

**3.** To confirm the accuracy of the minutes of the meeting held on 30th September 2020 (Pages 1 - 8)

**4.** North Worcestershire Community Safety Partnership - Update on Work in Redditch (Pages 9 - 58)

**5.** Anti-Social Behaviour - Update on the work of the Partnership (Pages 59 - 74)



# Crime and Disorder Scrutiny Panel

---

Wednesday, 30th  
September, 2020

## MINUTES

### Present:

Councillor Jennifer Wheeler (Chair), and Councillors Roger Bennett, Joanne Beecham, John Fisher and Mark Shurmer

### Also Present:

Nyear Nazir – Portfolio Holder for Community Services and Regulatory Services

### Officers:

Bev Houghton and Judith Willis

### Democratic Services Officers:

Jess Bayley

### 1. APOLOGIES AND NAMED SUBSTITUTES

Apologies for absence were received on behalf of Councillors Wanda King and Pattie Hill. Councillors John Fisher and Mark Shurmer attended as their named substitutes.

### 2. DECLARATIONS OF INTEREST AND OF PARTY WHIP

There were no declarations of interest nor of any party whip.

### 3. TO CONFIRM THE ACCURACY OF THE MINUTES OF THE MEETING HELD ON 25TH SEPTEMBER 2019

**RESOLVED** that

Chair

# **Crime and Disorder Scrutiny Panel**

---

Wednesday, 30th September, 2020

**the minutes of the meeting of the Crime and Disorder Scrutiny Panel held on Wednesday 25th September 2019 be approved as a correct record and signed by the Chair.**

#### **4. NORTH WORCESTERSHIRE COMMUNITY SAFETY PARTNERSHIP - UPDATE ON WORK IN REDDITCH**

The Community Safety Manager presented an update in respect of the work of the North Worcestershire Community Safety Partnership (NWCSP) in Redditch from September 2019 to August 2020.

During the presentation of the report the following points were highlighted for Members' consideration:

- The NWCSP covered the North Worcestershire wide partnership area and had been in existence since 2013. The responsibility for the Partnership was held by the relevant Portfolio Holder for community safety at each District.
- There were a number of sub-groups of the partnership which addressed specific community safety themes, including the Anti-Social Behaviour (ASB) Complex Cases group, the Hate Incident Partnership and the district Safer Groups.
- A Strategic Assessment was produced annually which led to a Community Safety Partnership Plan which set the priorities for the Partnership.
- There had been difficulties in developing the Partnership plan due to Covid-19 particularly with key partner agencies who had to prioritise local corporate delivery.
- A 2021-24 Partnership Plan was being developed which aligned with the new timescales of the West Mercia Police and Crime Commissioner's (PCC's) Plan. The plan had been delayed due to the cancellation of the PCC election and delivery timescales had been extended by a year in light of the extraordinary circumstances.
- The role of the Deputy PCC was outlined, and it was confirmed that the NWCSP worked closely around the commissioning model which led to a substantial investment for NWCSP activity. This investment included data analysis

# Crime and Disorder Scrutiny Panel

---

Wednesday, 30th September, 2020

- support and improvements to CCTV. A large proportion of CCTV infrastructure and modernisation work was carried out under difficult circumstances during the Covid-19 restrictions.
- £65k of PCC capital funding was allocated to 2020-21 to NWCSP to support additional or further works that might be needed to improve CCTV. This might include the improvement of existing cameras and further upgrades to the current digital infrastructure.
  - There was no final plan for the funding yet, but scoping work was being undertaken which might include 'bolt-ons' that would enhance the current scheme and the logistical and physical location of cameras.
  - The CCTV Monitoring Centre operated 24 hours a day, seven days a week. It was noted that staff that worked in the Monitoring Centre did a fantastic job. Some Members were keen to visit the centre once the Covid-19 restrictions were lifted. It was explained to Members that currently all Monitoring Centre Staff were working as part of 'bubbles' to ensure their protection against Covid-19. The Community Safety Manager confirmed to Members that contact would be made with the Monitoring Centre Manager and a visit arranged once restrictions were lifted and it was safe to do so.
  - A number of projects that were funded by the PCC related to and focussed on diverting and supporting young people from crime and ASB and was to be delivered in schools. The funding for these projects was finalised in August 2020 with a planned in-school delivery date of October 2020. Other projects that were to receive funding included supporting Redditch Town Centre in terms of community safety and the night-time economy and the Nominated Neighbour Scheme.

It was reported to Members that over 90 residents had signed up to the Nominated Neighbour Scheme. The scheme was implemented to protect the Borough's vulnerable residents and involved the nomination of a neighbour, trusted friend or organisation that was to be contacted should a cold caller attempt to make contact with the resident. This meant that the credentials of the cold caller were checked prior to contact with the resident. The additional funding

# **Crime and Disorder Scrutiny Panel**

---

Wednesday, 30th September, 2020

that was received was used to improve marketing of the scheme and the development of the Nominate a Neighbour pack, which Members of the Panel had previously received. It was agreed that the packs would be distributed to new Members of the Panel. It was presumed that once Covid-19 restrictions were further lifted there would be an increase in people making cold calls and rogue traders. The Portfolio Holder for Community Services and Regulatory Services, Councillor Nyear Nazir was invited to speak regarding the Nominated Neighbour scheme and in doing so expressed her support and urged Members to promote and communicate the scheme as much as possible.

Members were informed that the Hate Crime Awareness Week 2020 was being organised and invites were to be circulated to Members very shortly. High-profile speakers, including Frank Bruno MBE and Stuart Lawrence, younger brother of the murdered teenager Stephen Lawrence, had been secured for the event which was to be conducted online this year.

The Chair thanked the Community Safety Manager for her thorough report and noted she was particularly interested in the projects that involved young people. She expressed the view that she was also interested to see how successful current and future projects were, the benefit of these projects to the Town and whether they would be extended. She questioned how much of an increase there had been in incidents during Covid-19 and associated lockdown. Officers explained that NWCSP still received the quarterly updates and at the beginning of lockdown there was a significant reduction in all crime, due to restrictions. It was noted, however that there was a significant increase in ASB during the lockdown period. It was further commented that data collected during lockdown might have been slightly distorted and that the rise in reports might have been as a result of people working from home and a heightened awareness and sensitivities due to the pandemic.

**RESOLVED that**



# Crime and Disorder Scrutiny Panel

---

Wednesday, 30th September, 2020

- 1) **Nominated Neighbour Scheme information packs be circulated again for the consideration of new Members of the Panel; and**
  - 2) **the report be noted.**
5. **ANTI-SOCIAL BEHAVIOUR - UPDATE ON THE WORK OF THE PARTNERSHIP**

The Community Safety Manager summarised the ASB Update on the work of the Partnership and in doing so highlighted the following to Members:

- The update report was provided as a result of a request at Overview and Scrutiny Committee that an update on ASB was provided at the annual Crime and Disorder Scrutiny Panel meeting.
- The report looked at activity undertaken by the Community Safety Partnership to address ASB.
- ASB was a key theme in the data provided by the Community Safety Partnership and was regularly monitored and was a key priority for partners.
- Early intervention was key when dealing with ASB and there were a number of tools that were used to prevent the escalation of problems.
- Introductory Tenancies/Starter Tenancies were a very useful tool for Redditch Borough Council to use in the authority's role as a social housing provider as they clarified landlord and tenant expectations from the outset of the tenancy.
- Community Protection Warnings had been issued in 2019/2020 around various ASB incidents.

Members expressed an interest in whether there had been an increase in the amount of fly-tipping over the lockdown period. It was confirmed by the Community Safety Manager that, unfortunately this had been the case as during lockdown there had been less natural surveillance and footfall in certain areas. In addition to this, enforcement had been made more difficult due to lockdown restrictions. It was hoped that once restrictions

# **Crime and Disorder Scrutiny Panel**

---

Wednesday, 30th September, 2020

were lifted this would have a positive impact on both enforcement and investigations of fly-tipping.

The Chair queried the effectiveness of the Community Protection Warnings that had been issued. It was confirmed that they were effective and that only one warning that had been issued had proceeded to a Community Protection Notice. These were more formal notices and a breach of a Community Protection Notice resulted in a criminal offence.

There was a question in regard to the two Community Trigger applications for issues relating to disruptive neighbour nuisance that had been noted in the ASB report. Members expressed an interest in whether these cases were still ongoing or had been resolved and if they been issued in the current municipal year. The Community Safety Manager clarified that the cases were ongoing and had been issued in the current financial year, which started in April 2020. The process and criteria of the application for a Community Trigger was clarified to Members and it was explained that the process was predominantly concerned with finding action and outcomes for the applicant. The process was then monitored, reviewed and assessed by officers. Anything further that could be done to help the applicant was then identified.

One Member questioned whether a Closure Order could be applied if there was disorder and breaches in respect of Covid-19. The Community Safety Manager explained that there was specific legislation dealing with Covid-19 and that this legislation was enforced by the Police and Worcestershire Regulatory Services and was a swifter method of dealing with these kinds of breaches.

The Chair queried with officers whether the suspension of evictions was still in place and the Head of Community Safety and Housing Services reported that currently evictions were still suspended but that there were concerns about what would happen in the longer term.

# **Crime and Disorder Scrutiny Panel**

---

Wednesday, 30th September, 2020

Once the presentation had been completed the Chair thanked the Community Safety Manager for the detailed and informative report. She also thanked the Portfolio Holder for Community Services and Regulatory Services, Councillor Nyear Nazir and the Head of Community Safety and Housing services for their attendance.

**RESOLVED that**

**the report be noted.**

The Meeting commenced at 6.30 pm  
and closed at 7.40 pm

This page is intentionally left blank



Elected Member

## **BRIEFING**

---

To: Crime and Disorder Scrutiny Panel      From: Bev Houghton  
Service Area: Community Safety  
Contact Info: 01527 534187

CC: Cllr Nyear Nazir – Portfolio Holder for Community Services & Regulatory Services  
Sue Hanley – Deputy Chief Executive & Chair of NWCSP  
Judith Willis – Head of Community & Housing Services

### **North Worcestershire Community Safety Partnership 2020-21**

#### **1. Summary**

1.1 This report provides an update on the progress of the North Worcestershire Community Safety Partnership (NWCSP) from September 2020 to date.

#### **2. Background**

2.1 NWCSP has been in existence since May 2013, following the merger of the three district CSPs in Bromsgrove, Redditch and Wyre Forest. The Community Safety Teams that support and administer the Partnership continue to sit within the respective local authorities.

2.2 Local authority representation on NWCSP is fulfilled through a number of positions. Redditch Borough Council's Elected Member representative is the Portfolio Holder for Community Services & Regulatory Services, Councillor Nyear Nazir, appointed June 2020. Sue Hanley, the Council's Deputy Chief Executive is Chair of NWCSP and is also Redditch Borough Council's Responsible Authority representative on the Partnership. The Council's Community Safety Manager, Bev Houghton provides support to NWCSP and manages the Council's Community Safety Service.

2.3 Scrutiny arrangements for the CSP remain unchanged with local authorities having a statutory duty to scrutinise the work of its local CSP, under Section 19 of the Police and Justice Act 2006.

2.4 Alongside the relationship the Council has with the CSP, there is also a direct role in holding the West Mercia Police and Crime Commissioner (PCC) to account through the West Mercia Police and Crime Panel (PCP). Redditch Borough Council's representative on the PCP is the Portfolio Holder for Community Services & Regulatory Services, Councillor Nyear Nazir. The next West Mercia PCP meeting will be held on 15<sup>th</sup> September and the public

papers can be accessed here: [West Mercia Police and Crime Panel - Wednesday 15th September 2021](#)

### **3. Current Position**

#### **3.1 North Worcestershire CSP Plan 2021-24**

NWCSP has a statutory duty to produce a three year rolling plan outlining how the Partnership intends to address key crime and community safety priorities, as identified through its annual strategic assessment.

The strategic assessment gathers research, evidence and intelligence from national and regional sources, as well as drawing on professional expertise of those working locally. It is designed to be a point of reference and guidance to resource community safety initiatives among partner agencies across the area.

Informed by the strategic assessment, the Community Safety Partnership Plan sets out the priorities that the CSP will focus on for a 3 year period. Due to the disruption of Covid-19 and partner agencies prioritisation of responses to local communities during the pandemic, the Community Safety Partnership Plan was delayed slightly and has been developed for 2021-24.

Whilst this work takes place the Partnership continues to focus on its current priorities for the year as follows: -

- I. Reducing Violence and Abuse: including violence in public places, sexual offending, domestic abuse and Child Sexual Exploitation (CSE)
- II. Reducing Theft and Acquisitive crime: including shoplifting, thefts and burglaries
- III. Reducing Anti-Social Behaviour, Damage and Nuisance: including criminal damage, environmental issues and deliberate fires/arson
- IV. Protecting vulnerable communities: including reducing targeted harassment and threatening behaviour motivated by Hate
- V. Reducing Offending and Reducing the Harm caused by Drug and Alcohol Misuse are cross cutting themes which impact on all priorities

The North Worcestershire Community Safety Partnership Plan can be found at **Appendix 1**

#### **3.2 John Campion, West Mercia Police and Crime Commissioner**

John Campion was first elected as West Mercia PCC in May 2016 and following the postponement of national elections due to the Coronavirus pandemic was re-elected for a second term in May 2021.

The PCC has a duty to co-operate with all CSPs in his geographical area to reduce crime and disorder. There is also a reciprocal duty on CSPs to collaborate with the PCC and both the PCC and the CSP must have due regard for each other's priorities within their respective plans. The PCC's has recently opened his draft Safer West Mercia Plan 2021 – 2025 to public consultation and access to the draft plan and the consultation survey can be found here - [Draft Safer West Mercia Plan 2021-25 Consultation](#). The PCC's public consultation closes on the 1<sup>st</sup> November 2021

Once the plan is agreed NWCSP will review its own plan to ensure the PCC's priorities are reflected in its planned action activities, identifying areas where the Partnership can contribute to delivering the PCCs vision at a local level.

Tracey Onslow is the Deputy PCC and was appointed in July 2016. Tracey's role is to represent the PCC within communities across West Mercia, with a portfolio that includes rural, business and cyber-crime, victims' services and commissioning. CSPs work closely with the Deputy PCC as the West Mercia commissioning model continues to develop. Commissioning areas already reviewed by the Deputy PCC include CCTV improvements, the collation of funding for Data Analysis support and consolidation of funding for Integrated Offender Management funding. These commissioning reviews have led to funding being provided across West Mercia to deliver activities in these key community safety areas.

Since 2017-18 the PCC has allocated significant funding to develop and upgrade CCTV across the region. NWCSP benefitted from an allocation £195,000 of PCC funding for improvements to the area's CCTV scheme. The CSP, on behalf of the three Local Authorities, used this capital contribution to modernise the CCTV infrastructure that serves the three district areas. The upgrade now supports Internet Protocol Recording with greatly improved technological capabilities for digital processing. The CCTV scheme also now has enhanced digital capability, improved image quality and a greater capacity to expand the scheme and/or link up to other digital systems across the region.

The funding amounts involved made this project the most ambitious undertaken by the Partnership and the project was also match funded by the three District Councils with additional revenue, capital and in-kind support. A total amount of £339,000 of CSP funding was allocated to the project with the funding having to be spent by 31<sup>st</sup> March 2020. This was successfully achieved by the Project Management Team, with the majority of milestones met despite the disruption of Covid-19.

In 2020-21 the PCC allocated an additional amount of £65k capital funding towards CCTV (details of which can be found in **Appendix 2**) and a further 65k of capital funding has been awarded to NWCSP for 2021-22. The Project Team are currently working up spending proposals to put forward to the CSP.

### 3.3 Grant Funding from the PCC 2020/21

In addition to the CCTV capital allocation, NWCSP is allocated an annual ring-fenced amount from the PCC. Due to the disruptions of COVID 19 there was an underspend against certain projects during 2020-21. However, the PCC has allocated the same ring-fenced amount of £139,250 for 2021-22. Further details of the allocation can be found in **Appendix 2**.

The progress of grant funded projects is reported quarterly to the PCC and at the end of the financial year there is a requirement to provide a comprehensive evaluation of all the funded projects. This includes a full breakdown of project expenditure and the outputs/outcomes that the funding has achieved.

In early June the West Mercia Police & Crime Commissioner received confirmation from the Home Office that a North Worcestershire application to the Safer Streets 2 fund had been successful. This is the second, £20 million round of the Safer Streets Funding and is for the 2021/22 financial year. The fund targets neighbourhood crime, encouraging bids that provide a range of situational crime prevention measures in crime hot spots across England and Wales. This year, the round was opened to Local Authorities as well as PCCs and the criteria expanded beyond residential areas. The Home Office received a significant increase in bids with 97 applications: 64 from PCCs and 33 from Local Authorities across the country. The West Mercia Police/Redditch Borough Council partnership bid was one of only 50 successful project applications and the successful bid will target residential properties in Woodrow, Redditch. Further details of the Safer Streets – Woodrow project can be found in **Appendix 2**

### 3.4 Local Delivery, Key Projects and Progress

Local delivery of community safety projects and initiatives falls under the remit of the Community Safety Operational Groups. The Safer Redditch group is chaired by the District Policing Inspector and is supported by the Council's Community Safety Team.

The Council's Community Safety Team also continues to monitor and respond to district community safety issues, co-ordinating local operational delivery with partners. The team is often a first point of contact for residents and partners with concerns about local crime and community safety issues and officers are able to call upon other community safety partners when local concerns require a multi-agency response.

#### **Redditch Community Safety Project Officers**

Community Safety Project Officers Richard Waterhouse and Sarah McIntosh work on behalf of the Council and the CSP, delivering a variety of community safety projects and initiatives across the Borough. The team are also available to provide information, support and guidance to residents, council colleagues, external partners and elected members on a variety of crime prevention and community safety concerns and issues. **Appendix 2** provides an update on



some of the key community safety project activity that has taken place from September 2020 to date.

### 3.5 Community Engagement and Communications

Between Sept 2020 and Aug 2021, the Community Safety Team received multiple requests for service in Redditch and these were broken down as follows: -

55 requests from Residents  
 10 requests from Elected Members  
 40 requests from Partner Agencies  
 55 Requests from internal services  
 2 Private Business

#### **Subjects Included: -**

87 Domestic Abuse incl. MARAC discussions  
 32 Home Security Assessments  
 12 Homelessness/Begging  
 22 Nominated Neighbour Scheme  
 3 Road Safety – referred to the West Mercia Safer Roads Team  
 4 Safeguarding Queries

#### **Social Media**

The Community Safety Team supported various national and local campaigns throughout 2020-21 to promote key safety messages and the work of NWCSP. Partnership projects such as Nominated Neighbour, the Respect Programme and Hate Crime Reporting Awareness were promoted.

In addition to the annual Hate Crime Awareness Week and Domestic Abuse White Ribbon campaigns featured in **Appendix 2**, a number of other campaigns were also supported throughout the year, including:

Loan Shark Awareness  
 International Women's Day  
 Child Exploitation Awareness Week  
 Mental Health Awareness Week  
 Ask for Ani (NTE Safety Campaign)  
 Drowning Prevention Week  
 ASB Awareness Week

These awareness and information messages were seen by 18,343 people and interacted with by 1,447 people.

The Redditch Community Safety team also raises awareness of community safety issues and keeps residents and partners informed of work being delivered by partners on social media via @SaferRedditch twitter account and via the Councils' own Facebook pages.

The @SaferRedditch twitter account has 635 followers and in 2020/2021, total impressions via the @SaferRedditch account sharing community safety promotional campaigns reached 20.2 K accounts, with 896 direct engagements.

The breakdown for the main awareness campaigns for @SaferRedditch twitter account is:

Hate Crime Awareness Week – 6.2 K  
White Ribbon Domestic Abuse Campaign – 8.8 K  
CSE Awareness Day - 1.3 K

#### **4. Recommendation**

- 4.1 That the progress made by the North Worcestershire CSP be noted.

#### **5. Appendices**

Appendix 1: NWCSP Plan 2021-24  
Appendix 2: NWCSP Project Review 2020-21 Presentation

#### **6. Background Papers**

Draft Safer West Mercia Plan 2021-25 - [Draft Safer West Mercia Plan 2021-25 Consultation](#)

Home Office Safer Streets Fund 2021-22 - [Safer Streets Fund Application Process](#)

#### **Officer Contact Details:**

Name: Bev Houghton  
Title: Community Safety Manager  
Tel: 01527 534187  
Email: [bev.houghton@bromsgroveandredditch.gov.uk](mailto:bev.houghton@bromsgroveandredditch.gov.uk)



North Worcestershire  
**Community Safety Partnership**

# **Partnership Plan 2021-24**

## CONTENTS

---

	Page
Foreword	3
Introduction	4
North Worcestershire Community Safety Partnership	5
How We Work Together	6
Our Priorities	11
Contact Details	19

## FOREWORD

---

**I am pleased to present North Worcestershire Community Safety Partnership's (NWCSP) Community Safety Plan for 2021-24. It outlines our priorities over the next three years and the actions we will take to address them.**

NWCSP is committed to building on the progress made in recent years and will continue to drive down crime and disorder across Bromsgrove, Redditch and Wyre Forest. Our partnership is innovative and full of people who are passionate about creating a safe environment for our communities.

Our aim for this plan is to continue to build safer, stronger and more confident communities whilst navigating and adapting to the challenges brought about by the Covid-19 global pandemic.

We will do this by working together to decrease crime, improve community safety and address the threats, harms and risks associated with criminality; and at the same time implementing and responding to the requirements and regulations necessary to support our communities to move toward post-Covid recovery.

In the following pages, we have captured the areas of work that we will focus on as a partnership and the actions we will take to achieve our aims. I hope by reading this plan, you will see how NWCSP works together toward these aims, for the benefit of all who live, work in and visit our towns and villages.

**Sue Hanley**

**Chair of the North Worcestershire Community Safety Partnership**

## INTRODUCTION

---

This partnership plan has been prepared by NWCSP to help set out its community safety objectives and aims for 2021-24 in the context of the Covid 19 pandemic.

Since the first national lockdown implemented in March 2020 Covid-19 has continued to pose significant challenges to public agencies, local businesses and voluntary & community sector organisations as they work to support, protect and maintain services to our local residents.

Our partners continue to meet the ongoing challenges of redesigning processes and altering ways of working to provide services that are Covid-safe for both customers and employees alike and this has meant significant change, at an extraordinarily quick pace. Despite this, there also remains a consistent level of customer service and support offered by all partner agencies whilst adapting to and working within the various restrictions and requirements of national Coronavirus policy and regulation.

Both individually and collectively, Community Safety Partnership members are managing the effects of this unprecedented situation, constantly adapting service delivery and working practices in order to continue to support customers and clients, many of whom have been deeply affected by the many and sometimes life-changing consequences of the coronavirus pandemic.

Whilst the long term effect Covid-19 will have on crime, disorder and anti-social behaviour is unknown; this Partnership Plan is intended to inform residents, parish and town councils, and other stakeholders including the West Mercia Police and Crime Commissioner of the specific community safety actions NWCSP will carry out during the forthcoming years.

The Partnership vision for North Worcestershire is: -

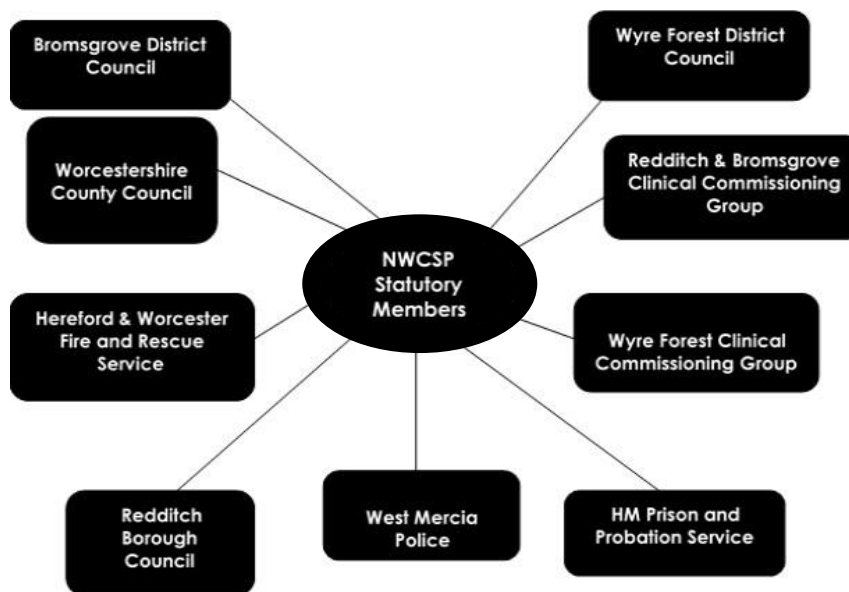
‘to keep North Worcestershire a safe place to live, work and visit’.

## NORTH WORCESTERSHIRE COMMUNITY SAFETY PARTNERSHIP (NWCSP)

---

NWCSP is a strategic partnership, bringing agencies together to reduce crime and offending in accordance with the Crime and Disorder Act 1998, Police Reform and Social Responsibility Act 2011 and the Anti Social Behaviour, Crime and Policing Act 2014.

The Partnership is made up of the following statutory organisations, together with a wider range of local agencies such as victim support services, housing associations and voluntary & community sector organisations. NWCSP aims to provide added value to the individual partnership agencies' day to day functions; working together to reduce the risks and harms associated with crime, disorder and anti-social behaviour.



NWCSP could not achieve its objectives without help from the public. It is the responsibility of everyone to play their part in helping to make themselves and their communities safer. Anyone can contribute to crime reduction and prevention by reporting crime and disorder when it happens; supporting criminal justice agencies by providing information and intelligence about offences that have taken place; and by taking responsibility for personal safety and the safety of others, particularly the most vulnerable in society.

For ideas on other ways to get involved, please visit [www.nwcsp.org](http://www.nwcsp.org)

## HOW WE WORK TOGETHER

---

The Partnership has a statutory duty to produce an annual Strategic Assessment which provides the data and evidence for proposed community safety activities and actions, as set out in the Partnership Plan. The Strategic Assessment also provides the framework for the CSP to measure performance and progress towards meeting its agreed outcomes for each of the community safety priorities.

Usually the Strategic Assessment collates the latest information and data, detailing recent levels of crime and ASB. This allows the CSP to consider the current position and assess any changing circumstances or emerging issues that could require multi-agency approaches or interventions. However, this year Covid-19 has had a significant effect on crime figures and data reporting.

Following a report by the Office for National Statistics Centre for Crime and Justice (ONS) released on 3<sup>rd</sup> Feb 2021, statisticians stated that:

*“The coronavirus pandemic and related lockdown restrictions have resulted in fluctuations in the level of crime experienced in England and Wales. Data from the survey [Telephone operated Crime Survey for England and Wales 2020] showed decreases in crime at the start of the pandemic, with rises seen over the summer months, specifically in theft, following the easing of lockdown measures, with overall crime now back at pre-lockdown levels of January to March 2020. There were also fluctuations in police recorded crime, but total recorded offences for July to September 2020 were below that seen in the same period in 2019.”*

[ONS - Crime in England and Wales: year ending September 2020](#)

In light of the challenge of 2020/21 crime data, the Partnership has also utilised Strategic Assessments and other CSP data products from previous years to inform priority setting for the refreshed Partnership plan. Alongside this, certain other considerations are also taken into account, such as:

- Level of harm – the impact offences have on victims and wider communities.



- Community concern – the level of priority that local residents attribute to a particular offence.
- Partnership added value – the extent to which multi-agency working can enhance the ability of agencies to tackle a particular pattern of offending behaviour.

This year's priority setting has also been developed with due regard to:

- Existing and emerging national priorities
- NWCSP's statutory duties and obligations
- West Mercia Police and Crime Commissioner's (PCC) Plan – Safer West Mercia
- Policing priorities included in the West Mercia Force Control Strategy
- Worcestershire Safer Communities Board's Community Safety Agreement

### ***West Mercia Police and Crime Commissioner***

---

John Champion was re-elected as the Police and Crime Commissioner for West Mercia on 6th May 2021. Mr Champion's focus will be on increasing the number of police officers on the streets and ensuring they are visible and accessible to communities. He has also prioritised the fight to reduce crime, bring criminals to justice and spend the public's money on efficient and effective policing. The PCC will be producing a new Police and Crime Plan, which will set out the strategic aims and priorities for his second term in office.

The PCC has a duty to co-operate with CSPs to reduce crime and disorder and there is a reciprocal duty on CSPs to collaborate with the PCC. The PCC and the CSP must also have regard for each other's priorities within their respective plans. PCC's vision has focused on four key areas:

- Building a More Secure West Mercia
- Reassuring West Mercia's Communities
- Putting Victims and Witnesses First
- Reforming West Mercia

This North Worcestershire CSP Plan has been developed to ensure that it aligns with the PCC's vision for policing across West Mercia and will continue to support the aims and objectives of the next West Mercia Police and Crime Plan.

### ***Serious Violence Statutory Duty***

---

In July 2019, the Government announced plans for a new legal duty on public bodies to prevent and tackle serious violence. The new 'public health duty' will cover the police, local councils, local health bodies such as NHS Trusts, education representatives and youth offending services.

The Home Office's intention is that the duty will ensure that relevant services work together to share data, intelligence and knowledge to understand and address the root causes of serious violence including knife crime. It will also allow those services to target their interventions to prevent and stop violence altogether.

The Government intends to amend the Crime and Disorder Act 1998 to ensure that serious violence is an explicit priority for Community Safety Partnerships, by making sure they have a strategy in place to tackle violent crime.

At the time of writing, NWCSP is still waiting for further information about what this new duty will mean in practice for the Partnership and will respond accordingly to any requirements emerging from the government's Serious Violence Strategy and any related legislation.

### ***Delivering the Partnership Plan***

---

The key to delivering North Worcestershire's priorities is effective and strong partnership working, as no individual agency alone can deliver the objectives of the CSP.

As a partnership we will set and monitor performance indicators that reflect the priorities, in order to measure progress toward the Partnership's delivery outcomes. We will measure and assess our activities a minimum of four times a year to check that we are achieving positive outcomes and making progress toward the aims of the plan.

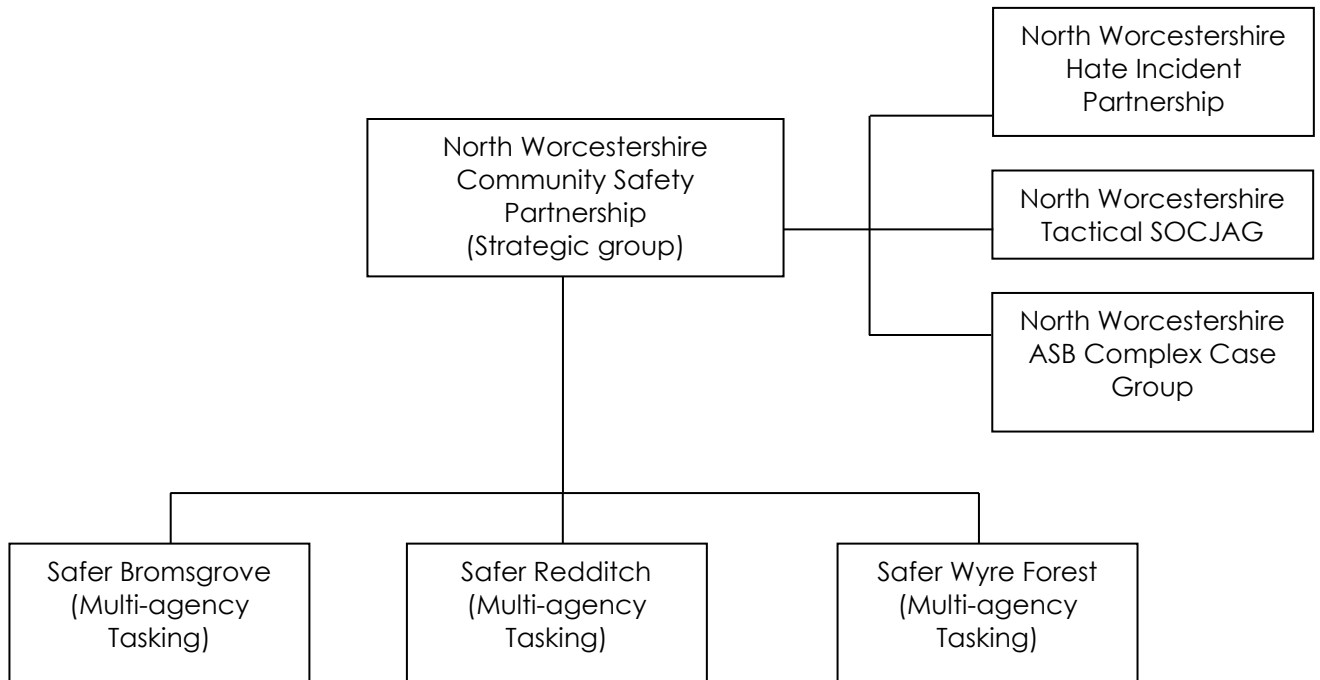
Effective crime reduction relies on understanding what and where our problems are. This enables us to direct partnership resources efficiently and effectively – to the right place at the right time. Crime trends and patterns are regularly monitored and NWCSP receives regular reports from key officers to enable collective monitoring of actions, performance and outcomes.

The Partnership consists of senior managers from the statutory Responsible Authorities alongside co-operating organisations and the Elected Councillors with responsibility for community safety, from each of the member Local Authorities. To provide oversight of the work of the Partnership, Elected Councillors hold community safety specific scrutiny committees which inspect the Partnership's performance. West Mercia's PCC is the public's elected representative for all policing matters and as such Community Safety Partnerships and the PCC have a duty to collaborate and pay due regard to each other's action plans. In fulfilling this duty, the PCC maintains strong links with each of the Community Safety Partnerships within the West Mercia force area.

Operational delivery of the partnership plan is carried out by a number of community safety sub-groups and forums. Safer Groups in each of the district areas are the core delivery arm of the CSP, where much of the on-the-ground activity is developed and undertaken. These groups co-ordinate partnership activity at an operational district level to solve current and emerging local problems.

**NWCSP Structure**

---



## OUR PRIORITIES

---

Partners use the Strategic Assessment and other sources to assess and prioritise the key crime and disorder issues that require multi-agency action within the Partnership's area of focus. When setting and reviewing CSP priorities consideration is also given to the local Policing objectives in the area. Partnership priorities are reviewed regularly and refreshed annually to ensure the CSP is always focused on addressing the issues that affect local communities the most.

The following priorities have been agreed by partners for 2021/22:

Priority	Aim: To Reduce/Prevent
Violence and Abuse	Public Place Violence
	Domestic Abuse and Sexual Violence
	Child Sexual Exploitation
Theft and Acquisitive Crime	Theft from Stores
	Burglary, Doorstep Crimes & Scams
	Rural & Business Crime
ASB, Damage and Nuisance	Neighbourhood Nuisance
	Criminal Damage
	Environmental Problems and Deliberate Fires
Protecting Vulnerable Communities	Hate Crime & Targeted Harassment
	Criminal Exploitation, County Lines & Modern Slavery
	Violent Extremism
Reducing the Harm Caused by Drugs & Alcohol	
Reducing Reoffending	

A summary of the type of activity the Partnership will undertake to address these priorities is provided below.

## Priority: To Reduce Violence and Abuse

---

### **Public Place Violence** - Summary of CSP Activity:

- Work with local businesses, regulatory services and public health to develop further understanding and intelligence around public place violence; particularly related to the Night-time Economy as town centres and licensed premises move toward post Covid recovery.
- Respond to and implement any requirements emerging from the government's Serious Violence Strategy and any related legislation.
- District Safer Groups to develop and co-ordinate specific actions and initiatives in response to local public place violence issues.

### **Domestic Abuse and Sexual Violence** - Summary of CSP Activity:

- Through MARAC and commissioned Domestic Abuse services, continue to develop and improve agency responses to high risk victims.
- Work with Domestic Abuse and Sexual Violence support services to develop and promote initiatives that focus on increasing reporting, early help and education.
- Increase and promote training opportunities to ensure all services are able to identify and offer support to customers at risk of or experiencing Domestic Abuse or Sexual Violence.
- Work with services to ensure all victims are able to access the right support to meet their needs, including male victims, victims from Black Asian and Minority Ethnic communities and victims of historical sexual violence.
- Through Drive, the Worcestershire Domestic Abuse Perpetrator Programme work with services to reduce offending and prevent risk and harm.
- Respond to any legislative requirements emerging from the Domestic Abuse Bill 2020 and the Violence against Women and Girls Strategy 2021-2024.
- Implement learning and recommendations from Domestic Homicide Reviews

**Child Sexual Exploitation** - Summary of CSP Activity:

- Support and expand the community safety Respect Programme in partnership with local schools to continue to provide therapeutic support to young people at risk of exploitation.
- Promote and deliver training and awareness raising to ensure parents, support workers and service providers are able to identify and support young people vulnerable to exploitation.
- Through work with schools, the local Respect Programme and other providers, to ensure children and young people have access to education on healthy relationships.
- Work with the Children's Safeguarding Partnership to promote Get Safe, the countywide safeguarding approach to addressing issues of Child Exploitation. [GET SAFE = **G**angs, **S**exual **E**xploitation, **T**rafficking, **M**odern Day **S**lavery **A**bsent or **M**issing, **F**orced Marriage, **C**riminal **E**xploitation]

**Priority: To Reduce theft and acquisitive crime**

---

**Theft from Stores** - Summary of CSP Activity:

- Work with partners such as the North Worcestershire Economic Development and Regeneration (NWEDR) Unit, business networks and retail partnerships to identify opportunities for crime prevention, improving store security and improved data collection and analysis.
- Work with Integrated Offender Management (IOM) partners in the criminal justice system, to ensure prolific and persistent offenders are brought to justice.
- Work with commissioned Drug and Alcohol services and IOM to promote support options and interventions to reduce reliance on theft to support addictions.

**Burglary, Doorstep Crimes and Scams** - Summary of CSP Activity:

- Raise awareness of criminality and provide residents with the tools and information to protect their homes and property.
- Offer support, information and advice to Burglary victims to reduce the risk of re-victimisation.
- Promote and expand the CSP's Nominated Neighbour scheme to encourage residents to look out for and protect the most vulnerable members of their local communities.
- Promote the PCC's SmartWater Village Scheme and the Police We Don't Buy Crime initiative to support a co-ordinated approach to protecting local rural areas.
- Raise awareness of scams, fraud and cyber-crime, focusing on the most vulnerable and those most at risk of being targeted.
- Deliver seasonal initiatives to raising awareness and provide advice to the public on how to reduce the risk of becoming a victim of these crimes.
- Targeted joint-agency work to engage with and raise the awareness of residents/communities in areas where issues such as scams and distraction burglary are more prevalent (e.g. elderly residents).

**Rural and Business Crime** - Summary of CSP Activity:

- Promote the PCC's SmartWater Scheme and the Police We Don't Buy Crime initiative to support a co-ordinated approach to protecting local businesses communities and rural areas.
- Support and promote business community and rural area networks, such as Farm Watches and Business Links, providing crime prevention information and sharing intelligence to prevent victimisation.
- Support West Mercia PCCs Business and Rural crime strategies and work with local affected communities to understand and address the issues they are facing.



## **Priority: To reduce antisocial behaviour (ASB), damage and nuisance**

---

### **Neighbour Nuisance** - Summary of CSP Activity:

- Promote and utilise the powers and legislation available to the Police, Councils and other partners to tackle ASB and nuisance.
- Raise awareness of support services and provide residents with pathways to raise concerns and request action i.e. Tenancy Panels, Complaints processes, Community Trigger/ASB Case Review etc.
- Offer support, information and advice to vulnerable victims of ASB victims to reduce the risk of continued re-victimisation or escalation.
- Respond to any legislative requirements emerging from the Social Housing White Paper 2020 in relation to ASB and Safer Homes & Neighbourhoods.
- North Worcestershire ASB Complex Case Group to develop and co-ordinate specific actions and initiatives in response to local concerns about ASB issues.

### **Criminal Damage** - Summary of CSP Activity:

- Utilise improved CCTV capabilities across North Worcestershire to identify and take action against perpetrators.
- Utilise and support the work of established Detached Youth Work teams in each district area to engage with young people in local neighbourhoods at risk of becoming involved in ASB and criminality.
- Make use of opportunities for community resolution and restorative justice with offenders to repair damage in public spaces.

### **Environmental Problems and Deliberate Fires** - Summary of CSP Activity:

- Promote and utilise the powers and legislation available to the Councils, Regulatory Services and other partners to tackle environmental problems and crimes.
- Publicise environmental crime prosecutions and enforcement action taken against offenders in order to prevent and deter further offending.

- Work with partners to improve data collection and shared intelligence around environmental problems and deliberate fires in order to identify patterns of behaviour and target resources more effectively.
- Raising awareness of the dangers of fire raising and deliver fire safety messages within local communities.

## **Priority: Protecting Vulnerable Communities**

---

### **Reducing Hate Crime and Targeted Harassment** - Summary of CSP Activity:

- Through North Worcestershire Hate Incident Partnership continue to raise awareness of hate crime in all its forms, providing appropriate support information and increasing opportunities to report incidents securely and safely.
- Offer support, information and interventions to vulnerable victims of Hate Incidents/crimes to reduce the risk of continued re-victimisation or escalation.
- Increase and promote training opportunities to ensure all services are able to identify and offer support to customers at risk of or experiencing Hate Crime and Targeted Harassment.

### **Reducing Criminal Exploitation, County Lines & Modern Slavery** - Summary of CSP Activity:

- Through North Worcestershire Serious Organised Crime Joint Action Group (SOCJAG) continue to raise awareness of organised crime and exploitation across agencies and with the public.
- Support and engage with the SOCJAG and MATE processes to identify areas of concern, share intelligence and take joint action to disrupt Organised Crime Groups (OCGs) operating in our areas.
- Further develop our knowledge and understanding of criminal exploitation, county lines and modern slavery locally, including areas and communities that may be more vulnerable to targeting by criminals.
- Raise awareness and provide support and information to services, businesses and organisations likely to come into contact with those vulnerable to exploitation.

**Preventing Violent Extremism-** Summary of CSP Activity:

- Through Worcestershire Prevent Strategy Group to raise awareness of Prevent and organisations statutory duties under the Counter-Terrorism and Security Act 2015 (as amended)
- Support and engage with the Channel Process and ensure that support is available for young people and vulnerable adults at risk of radicalisation. SOCJAG and MATE processes to identify areas of concern, share intelligence and take joint action to disrupt Organised Crime Groups (OCGs) operating in our areas.
- Further develop our knowledge and understanding of terrorism and risks of radicalisation locally, including areas or communities that may be more vulnerable to targeting by extremists.

**Cross Cutting Themes**

---

Reducing the Harm caused by Drugs and Alcohol and Reducing Re-offending remain cross cutting areas of work for partners that impact on all CSP priorities. NWCSP works closely with Public Health and Commissioned Drug and Alcohol Services and is also represented on the Worcestershire Reducing Reoffending Strategy Group.

NWCSP activity in these areas as part of the plan will include:

- Support and encourage joint Police and Licensing Team visits to licensed premises in North Worcestershire to ensure adherence to licensing conditions and to encourage the responsible sale of alcohol as premises move toward post Covid recovery.
- Support and facilitate the referral of vulnerable individuals at risk of exploitation to local support services to safeguard them against harm e.g. risk of cuckooing of a vulnerable tenant's property due to substance dependency.
- Use of enforcement powers e.g. Criminal Behaviour Order, to take action against identified persistent offenders engaging in ASB where behaviour is alcohol-related.
- Support and resource targeted outreach work delivered by youth workers to engage with young people at risk of drug or alcohol-related ASB.

- Promote use of Dispersal Orders and Community Protection Warning letters/Notices for those individuals repeatedly involved alcohol or drug-related crime.
- Continue work with Integrated Offender Management (IOM) partners in the criminal justice system, to ensure offenders are brought to justice.
- Seek to publicise prosecutions and enforcement action taken against offenders, where appropriate, in order to prevent and deter further offending.
- Make full use of both permanent and deployable CCTV camera systems in our district areas to deter offending behaviour, capture evidence and improve public safety.
- Share intelligence through the district Safer Groups and other CSP sub-groups to help bring offenders to justice.

**CONTACT DETAILS**

---

North Worcestershire Community Safety Partnership  
[www.nwcsp.org.uk](http://www.nwcsp.org.uk)

Crime Stoppers 0800 555 111  
[www.crimestoppers-uk.org](http://www.crimestoppers-uk.org)

West Mercia Police non-emergency number 101  
[www.westmercia.police.uk](http://www.westmercia.police.uk)

Hereford and Worcester Fire & Rescue Service  
[www.hwfire.org.uk](http://www.hwfire.org.uk)

Bromsgrove District Council  
[www.bromsgrove.gov.uk](http://www.bromsgrove.gov.uk)

Redditch Borough Council  
[www.redditch.gov.uk](http://www.redditch.gov.uk)

Wyre Forest District Council  
[www.wyreforestdc.gov.uk](http://www.wyreforestdc.gov.uk)

Worcestershire County Council  
[www.worcestershire.gov.uk](http://www.worcestershire.gov.uk)

NHS Redditch and Bromsgrove Clinical Commissioning Group  
[www.redditchandbromsgroveccg.nhs.uk](http://www.redditchandbromsgroveccg.nhs.uk)

NHS Wyre Forest Clinical Commissioning Group  
[www.wyreforestccg.nhs.uk](http://www.wyreforestccg.nhs.uk)

HM Prison and Probation Service  
[www.gov.uk](http://www.gov.uk)

Warwickshire and West Mercia Community Rehabilitation Company  
[www.westmerciaprobation.org.uk](http://www.westmerciaprobation.org.uk)

---

This page is intentionally left blank



# North Worcestershire **Community Safety Partnership**

## 2020/21 Review of the Community Safety Partnership

Bev Houghton  
Community Safety Manager  
September 2021

# NWCSP Responsible Authorities

- West Mercia Police
- Bromsgrove District Council
- Redditch Borough Council
- Wyre Forest District Council
- Worcestershire County Council
- Hereford and Worcester Fire and Rescue Service
- The Probation Service
- Redditch & Bromsgrove Clinical Commissioning Group
- Wyre Forest Clinical Commissioning Group



# NWCSP Priorities

The following priorities have been agreed by partners for 2021/22:

Priority	Aim: To Reduce/Prevent
Violence and Abuse	Public Place Violence
	Domestic Abuse and Sexual Violence
	Child Sexual Exploitation
Theft and Acquisitive Crime	Theft from Stores
	Burglary, Doorstep Crimes & Scams
	Rural & Business Crime
ASB, Damage and Nuisance	Neighbourhood Nuisance
	Criminal Damage
	Environmental Problems and Deliberate Fires
Protecting Vulnerable Communities	Hate Crime & Targeted Harassment
	Criminal Exploitation, County Lines & Modern Slavery
	Violent Extremism
Reducing the Harm Caused by Drugs & Alcohol	
Reducing Reoffending	

# CCTV - Additional PCC Funding for 2020/21

Area	PCC Grant
Install 1 x New Camera and Pole in Sanders Park	£19,075.81
Upgrade of 4 x Cameras at Woodrow Centre, Redditch	£7,974.48
Upgrade of 4 x Cameras at Redditch Town Centre	£13,097.88
Upgrade of 3 x Cameras in Bewdley	£15,048.81
Upgrade of 4 x in Stourport	£8,800.00
Bromsgrove, Redditch, Wyre Forest Signage	£1,003.02
<b>Total</b>	<b>£65,000</b>

NWCSP has been allocated a further £65,000 for CCTV for 2021-22 and proposals are being developed by the CCTV Project Team

# Allocation of NWCSP Core Funding - 2021/22

Area of Benefit	PCC Grant
West Mercia CSP Analyst Team (Top Sliced)	£20,000.00
West Mercia Integrated Offender Mgt. (Top Sliced)	£ 5,000.00
Bromsgrove Projects	£29,084.22
Redditch Projects	£31,083.55
Wyre Forest Projects	£33,083.23
North Worcestershire Projects	£21,000.00
<b>Total</b>	<b>£139,250.00</b>

# Community Safety Project Updates

2020-21 (To Date)

---

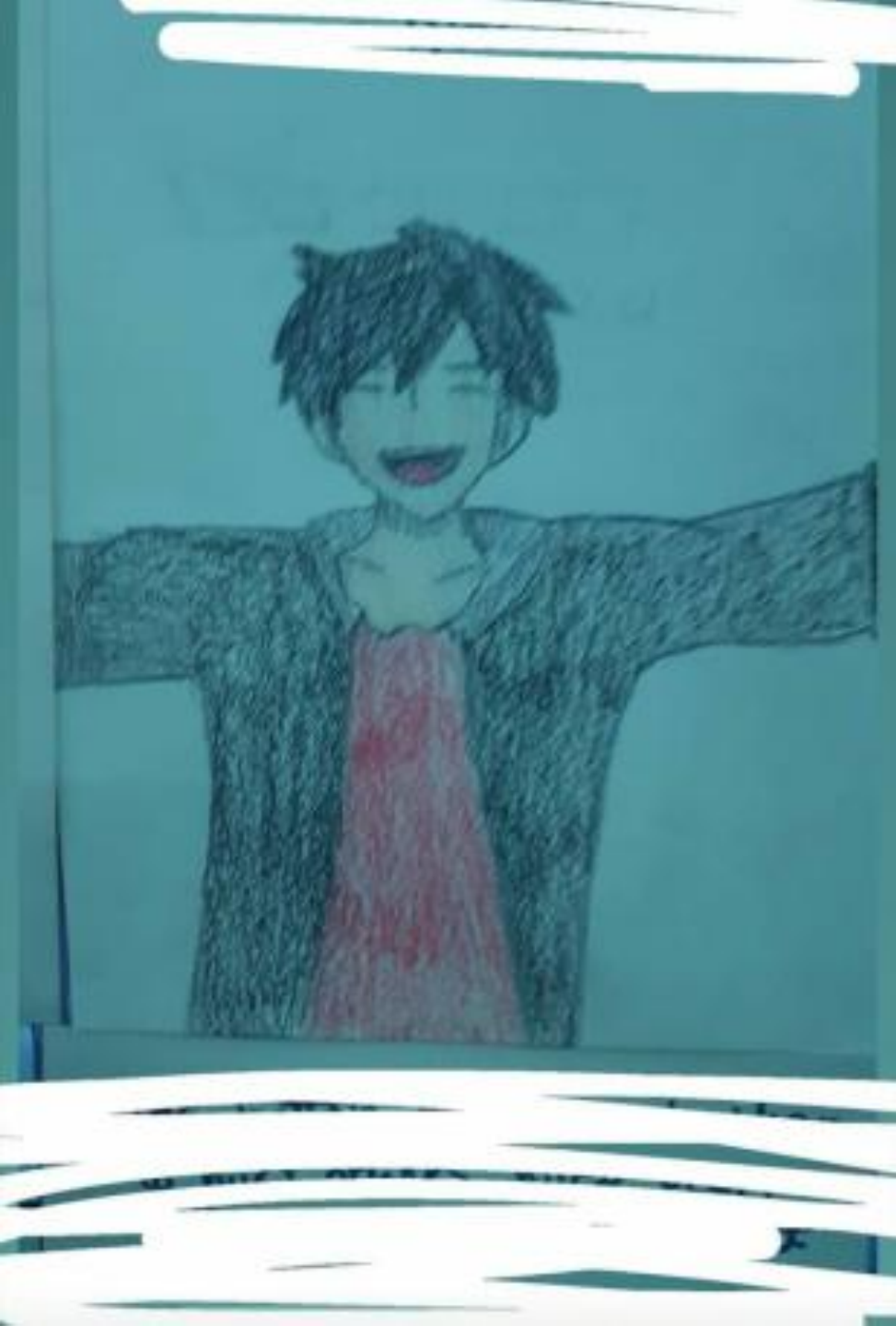


The Respect programme provides community safety awareness sessions as part of school PHSE drop down days and bespoke classroom sessions on a number of subjects such as recognising and reporting hate crime, understanding healthy relationships/domestic abuse, the dangers of substance misuse and promoting respect and community responsibility.

The programme also provides a therapeutic mentoring scheme which provides weekly support and guidance sessions to young people at risk of becoming victims or perpetrators of crime.

During the lockdown restrictions in 2020, PHSE Drop Down Days and Classroom sessions were postponed. However the Respect Programme adapted very quickly, changing its mentoring delivery method to online sessions. With the support of schools, the programme was able to continue by providing online support sessions to 75% of its existing participants using video hosting platforms.

Between September 2020 and July 2021, the programme received **186 referrals** for 1 to 1 support through the therapeutic mentoring sessions. Mentors were able to re-establish face to face contact from September 2020, enabling all these young people to be seen in face to face sessions. Unfortunately further lockdowns in the winter months of 2020-21 meant a return to online sessions for another period of time.



# The Empowering Young People Programme

---

This CSP funded project provides an 11-week programme of arts and crafts, issue-based activities and interactive workshops addressing issues such as life skills, confidence building and self-esteem work. The aim of the project is to support at-risk young people to develop healthy personal relationships and raise awareness of the risks associated with CSE and County Lines.

Since September 2020, three separate groups have been delivered in a Redditch High School. The sessions initially began as face to face delivery within the school, but with a further lockdowns in Nov 2020 and Jan 2021, sessions went on to be delivered remotely with the young people being seen on a one to one basis. This programme has proved to be very successful with the school already requesting future sessions in the new term.

# Empowering Young People Programme

Tutor evaluation data highlighted that: -

*Overall the young people found the course beneficial and enjoyed attending the sessions, where they felt safe and comfortable. They felt that they had become more aware of risks including alcohol and unhealthy relationships. The group also felt that the sessions helped with mental health issues and with making decisions about the future. Some have commented that their confidence and general wellbeing has improved.*



# Youth Outreach and Detached Youth Work



This CSP funded project provides a team of trained, outreach/detached youth workers who engage with and support young people involved in or at-risk of becoming involved in on-street ASB.

During lockdown, the detached youth teams were allocated key worker status and this allowed them to resume on street patrols. This was extremely beneficial for at-risk young people, struggling with the impact of Covid 19 and the team had over 1000 individual on-street engagements.



# Redditch Youth Outreach

In September 2020, NWCSP commissioned detached youth work delivery by the Unlocking Potential Foundation, a Community Interest Company formed in 2015. The UP Foundation regularly patrol key locations and public spaces in Redditch as well as providing positive sporting and energy expending activities for young people.

The UP Foundation works with young people to help them believe in themselves, learn new skills, move away from unhealthy and anti-social behaviours helping them identify ways to make positive progress in their lives. The team began the detached/outreach programme in September 2020



# Redditch Youth Outreach



NWCSP is currently working with the Up Foundation to identify funding that can support additional diversionary activities and group work sessions such as DJ workshops and sports activities, which through the outreach work can then be used to divert young people off the streets and into positive activities.

The team engage with groups of young people and community members, utilising information and data from the Community Safety Team and the Police. The team work with young people, partners and businesses to address concerns in local areas and to gain insight into what interventions might be needed to promote change. This is as well as being a positive role models and trusted adults in the community.



# Youth Outreach

Our Youth Workers have been able to make regular contact and build relationships with some of the hardest to reach young people. Establishing these trusted relationships and discussing what affects young people's thoughts, feelings and behaviour has led the youth workers have set up diversionary sessions such as multi sports activities and music projects alongside and targeted therapeutic support sessions.



# Virtual Decisions Knife Crime Project

Delivered by Round Midnight Ltd, a Birmingham based theatre in education company

Virtual\_Decisions is a one-of-a-kind, innovative, exciting VR in Education program that is helping to support thousands of young people who are at risk of criminal exploitation.

By wearing a VR headset, each participant is placed in a real world scenario where they are faced with multiple dilemmas in which they must make a choice. Each choice results in various outcomes, showing that every action has a consequence. The production uses real world actors aged 14 – 25 to give authenticity to the piece.

Following the immersive 8 minute VR film, a creative arts workshop then explores the issues raised in more depth. Through discussions and drama exercises the young people are able to reflect on their own personal journey within the VR and compare it to that of others, making it a user led – and user shared – experience.



[Virtual Decisions - Round Midnight](#)



# YOUNG CITIZEN'S CHALLENGE

The Young Citizen's Challenge is usually delivered in partnership with the police and fire service and is held at the Bromsgrove Fire station in May. In May 2019 the week engaged with over a 1000 young people from Year 6, and delivered key safety messages around fire safety, water safety, personal safety and stranger danger.

Due to the national lockdown restrictions, the 2020 event had to be cancelled. Instead the Fire Service developed the Safe Zone Project, an educational website created to provide the key safety messages that would normally be covered during the Young Citizens Challenge. The content can be accessed via this link: <https://www.safe-zone.uk>.



**Safer Streets is a £430,000 crime-fighting project to improve the security and safety of EVERY home in Woodrow Centre, Ombersley Close, and Rushock Close.**

# Safer Streets Fund 2021/21

The West Mercia Police/Redditch Borough Council partnership bid was one of only 50 successful project applications and the amount awarded was **£431,185.**

The funding will be used to deliver a programme of targeted security improvements, focusing on a Lower Super Output Area (LSOA) within the neighbourhood area of Woodrow, which covers Rushock Close, Ombersley Close and Woodrow Centre residential flats.

# The funding will be used to provide the following improvements

---

**Enhanced Door Security**

---

**Window Lock Upgrades**

---

**CCTV Upgrades**

---

**Improved Fencing**

---

**Landscaping**

---

**Improved Street Lighting**

---

**Alley Gating**

---

**Property Marking**

---

**Home Security Products**

---

**Neighbourhood Watch**

---

**Community Development Projects**

---



An official launch of the project has been scheduled for Friday 24th Sept where John Champion, West Mercia PCC and Redditch Community Safety Portfolio Holder, Cllr Nazir have will be in attendance. A request has also been submitted for the new West Mercia Police Chief Constable, Pippa Mills to attend if scheduling allows.

A multi-agency project development team meets fortnightly to co-ordinate and deliver the actions of the project.

# Nominated Neighbour Scheme

The Nominated Neighbour scheme, which aims to protect vulnerable residents from door step crime and rogue trader offences, continues to be a successful local initiative.

To date over 120 Residents have signed up and the Covid-19 restrictions provided an opportunity to fully evaluate the scheme with every resident signed up to the scheme being contacted to assess its success. The evaluation identified that not one member of the scheme had any issues with cold callers since signing up to the initiative.



# Home Security Assessments

Between Sept 2020 and August 2021, the Community Safety Project Officer carried out 32 Home Security Assessments at the properties of vulnerable residents with many households also receiving upgrades and improvements to the physical security of their properties. Some security assessments were made as a result of discussions about the safety of domestic abuse victims held at MARAC meetings. However, others were carried out at the request of other community safety partners and council service areas such as the Police and the Neighbourhood and Tenancy Teams





# Domestic Abuse Support and MARAC

---

Between September 2020 and August 2021, Community Safety Project Officer Richard Waterhouse has assisted in protecting **75 vulnerable and high risk victims** of domestic violence across Redditch.

Richard attends the local MARAC (Multi-Agency Risk Assessment Conference) which is a nationally recognised process for managing high risk Domestic Abuse cases. Vulnerable residents assessed as being at risk of serious harm from an intimate partner or family member are referred into MARAC for the purpose of coordinating safeguarding activities by all organisations that can offer support and assistance.

Richard is the council's single point of contact for the MARAC process, in line with nationally recognised best practice for individual agencies to have a designated MARAC officer. In addition to attending meetings and providing appropriate information to the process, as a qualified crime reduction officer, Richard also carries out home security and sanctuary assessments for these high risk tenants.

Alongside MARAC Richard also liaises with DAPP (Domestic Abuse Perpetrator Panel) which aims to work with high risk perpetrators of domestic abuse to stop their offending.

# Planning Consultation



Community Safety Project Officers Dave Rischmiller and Sarah McIntosh are College of Policing trained Designing Out Crime Officers and can review planning applications to make appropriate crime prevention and security recommendations with the aim of making future developments less vulnerable to crime and disorder

In 2019/20 advice was provided on 10 planning applications (320 residential units, 2 commercial units)

In 2020/21 advice was provided on 20 planning applications (820 residential units, 23 commercial units)

It is important to note that as well as the social impact of crime and disorder, there is also an environmental impact. Research conservatively estimates the carbon cost of crime within the UK to be in the region of 6,000,000 tonnes of CO<sub>2</sub> per annum. This is roughly equivalent to the total CO<sub>2</sub> output of 6 million UK homes. Effectively designing out crime at build or refurbishment stage therefore delivers additional environmental benefits

Source: Pg5 of [Secure by Design HOMES BROCHURE 2019 NEW version 2.pdf](#)

# Hate Crime Awareness Week



In October Hate Crime Awareness Week 2020 was promoted by a social media campaign which linked both the national and local messaging encouraging residents to report hate crimes and hate incidents.

# 2020 Hate Crime Awareness Conference

Due to the national lockdown restrictions, the Hate Crime conference was held as a webinar with guest speakers, Kriss Akabusi MBE - Olympian and World, European and Commonwealth Athletics Champion. Rt. Hon. Stuart Lawrence – Coach, Motivational Speaker and brother of Stephen Lawrence. With a special message of support from Frank Bruno MBE who was unable to take part due to ill health.

The remote conference was attended by over 100 people, who were made up of a mixture of local residents and partners.

During HCAW local partners sent in key messages which were shared on social media to promote the “Report It” message.



# White Ribbon Domestic Abuse Campaign Nov - Dec 2020

*It happened at a young age when he hurt me it was scary.  
I said sorry it wasn't enough though 'cause apologies  
aren't enough.*

*Chorus: I'm not invisible anymore 'cause I let you hurt me.  
He has got the same size fist as my heart.*

*He hit me one time and I could have got away,  
He wouldn't let me go so I tried to not go  
Because my pain is so hard.*

**#WhiteRibbonDay #NoExcuseForAbuse**



Due to the national restrictions, 2020/21 saw the Community Safety Team design a Social Media campaign which was supported by local schools, our partners and the local press.

There were messages shared across the 16 Days of Action and the voices of young people were captured throughout the campaign to show their thoughts and feelings about Domestic Abuse and unhealthy personal relationships.



# ASB Focus Group

This is a quarterly forum chaired by David Rischmiller, in the Community Safety Team. The group brings together a range of partners who deal with ASB including Police, Housing Associations, Private Housing providers, Environmental Officers and Planning Enforcement.

Rather than specific case management the aim of the forum is to encourage and support professionals in tackling complex ASB issues and to share national and local good practice.

The Community Safety Team supports professionals, advising them in the use of ASB tools & powers such as Community Protection Warnings and Notices.



Elected Member

## **BRIEFING**

---

To: Crime and Disorder Scrutiny Panel      From: Bev Houghton  
Service Area: Community Safety  
Contact Info: 01527 534187

CC: Cllr Nyear Nazir – Portfolio Holder for Community Services & Regulatory Services  
Sue Hanley – Deputy Chief Executive & Chair of NWCSP  
Judith Willis – Head of Community & Housing Services

### **Anti-Social Behaviour – Update on the work of the Partnership**

#### **1. Summary**

This report provides an update on activity to address Anti-Social Behaviour undertaken by North Worcestershire Community Safety Partnership from Sept 2020 – to date.

#### **2. Background**

Following the presentation of the Council's updated ASB Policy in June 2020, Elected Members requested that an update on activity to address ASB issues be presented at the annual Crime & Disorder Scrutiny Panel.

Working with our partner agencies there are a number of tools and remedies available when dealing with cases of ASB. Support is provided throughout each process with referrals to other organisations made as and when it is appropriate.

Attached at **Appendix 1** is a brief overview of reported ASB in North Worcestershire and Redditch to date. Data for 2018/19, 2019/20 and 2020/21 has been included to provide a true picture of ASB reports to the Police across the borough in light of the impact Coronavirus restrictions had on reporting during 2020/21

#### **3. Preventative/Early Intervention Tools**

There are a number of early intervention methods that are used by partnership agencies to assist in preventing the escalation of problems; these include joint agency home visits such as Housing Officers, the Police or Children's Services, advisory letters and early words of advice.

#### **Introductory Tenancies**

Redditch Borough Council Locality teams and other Social Landlords make use of Introductory Tenancies/Starter Tenancies which allow Housing Managers to deal quickly with problems like ASB. At sign-up new tenants are advised of the terms of their agreement relating to ASB/causing nuisance and officers clarify the Landlord's expectations and any consequences, to ensure residents understand their responsibilities from the outset of their new tenancies.

### **Warnings and Agreements**

The Police and Social Landlords issue verbal and written warnings to address unacceptable behaviour and reinforce that ASB will not be tolerated in our communities. The Police, Council services and Social Landlords will use warnings to remind residents of their obligations under their tenancy/lease or the rule of law and the warning sets out the specific clauses, conditions or legislation that has been breached. When issuing warnings, partners clarify the issue, advise the individual that their behaviour is being monitored and warn the individual or business that further enforcement action will be taken if their anti-social behaviour continues.

To date the following Community Protection Warnings have been issued by Council services: -

Between Sept 2020 and August 2021, **23** Community Protection Warnings (CPW) have been issued by the Neighbourhood and Tenancy team to tenants whose behaviour has been affecting the quality of life of other residents in the community. **11** Community Protection Notices (CPN) have subsequently been issued due to failure to comply with a Warning. As outlined below, failure to comply with a CPN is a criminal offence.

A further **9** CPW's have been issued by Planning Enforcement, primarily to businesses whose activity has had a detrimental effect on the wider community. **1** CPN has been issued.

The Community Safety team continue to provide guidance and advice to colleagues and partners on use of the ASB Tools and Powers and regularly liaise with national ASB Enforcement experts to ensure advice is accurate and up to date.

The Police also issue a number of Community Protection Warnings/Notices to individuals for their anti-social behaviour in the community and in public spaces and the Community Safety Team liaise regularly with the Police SNTs and Problem Solving Hub in order to share information and co-ordinate enforcement activity.

### **Mediation / Restorative Justice**

Landlords are able to offer the use of external mediation organisations to help resolve disputes. The types of situations they can assist with include, but are not limited to, noise, youth nuisance, pets, shared spaces and lifestyle differences. This is an option being investigated by Redditch Borough Council as part of its review of Housing Services.



**Diversions Activities for Young People**

Young people are often profiled as causing ASB, sometimes, mistakenly or unintentionally, i.e. not understanding that loitering can be perceived as intimidating to others. The partnership is committed to providing opportunities for young people, to help challenge some of these beliefs and behaviours and provide a platform for young people to engage and find new interests. This year NWCSP has allocated over £27,000 of grant funding to youth work projects in Redditch.

In addition to the CSP funding, the Community Safety Team has been successful in bidding for Containment Outbreak Management Funding (COMF) from the County Council Public Health Team to deliver projects aimed at supporting Covid-19 recovery. Enhanced Youth Support COMF has been allocated to Redditch districts to increase service delivery and build capacity amongst young people who have been disproportionately affected by the pandemic and are potentially more at risk of becoming victims and/or perpetrators of crime and ASB.

Public Health has identified that adolescence can be a time where teens initiate risk taking behaviour and cease or reduce some protective behaviours. Health outcomes are significantly worse for certain groups of young people including those in care, those engaged in the youth justice system, ethnic minorities and those living in the most deprived communities and there is a strong association between socio-economic status and risk-taking behaviour in adolescence. The COVID-19 pandemic has exacerbated many existing health inequalities, and young people have been disproportionately impacted.

Due to the established track record of the Community Safety Respect Programme and its proven ability to engage with and support vulnerable and at-risk young people, district youth support COMF has been allocated to support additional delivery of: -

- 1-2-1 Mentoring Support
- Empowering Young People Group Work
- Detached and Outreach Youth Work

Funding has been allocated based on a WCC Public Health formula taking into account both population and need. In 2020/21 (Yr.1) Redditch has been allocated £83,837 and funding for Yr. 2 and Yr. 3 has also been confirmed.

**Designing out ASB – Environmental Visual Audits**

Where there are instances of ASB activity in an area or estate, Community Safety partners carry out joint visits with residents and other relevant partners to identify improvements, repairs and additional security that may benefit the area or estate. The aim is to identify physical and environmental improvements to areas and neighbourhoods to help reduce ASB and tackle location specific issues.

The Community Safety Project Officers are nationally qualified Designing Out Crime Officers (DOCO) or College of Policing trained Crime Reduction Officers and they also carry out a number of environmental visual audits, surveys of neighbourhoods, public spaces to provide crime risk assessments at locations where it has been reported that ASB is having a detrimental effect on the community. The expert advice they have provided either has or is in the process of being implemented in order to improve the situations for the wider community.

### **Community Trigger/ASB Case Review**

The Community Trigger/ASB Case Review is a process that was introduced as part of the ASB Crime and Policing Act 2014 and provides a facility for victims of ASB to request a review of their reported case, if they feel that no action has been taken. Relevant agencies have to come together to review their responses to the reported problem and identify if there is any further action that can be taken.

The process is owned by NWCSP and is administered by the Council's Community Safety Team. This year, the team has received 3 Community Trigger applications in Redditch for issues relating to disruptive neighbour nuisance.

The Community Trigger/ASB Case review process as laid out in the Act has a number of timescales that need to be met to ensure that the applicants receive timely responses to their concerns.

The Community Safety Team also attend a number of early intervention meetings with partners and other service areas to try to identify and address issues of ASB as quickly as possible, to prevent escalation to serious neighbourhood disorder and criminal activity. For example, Project officers attends a monthly multi-agency meeting to discuss and assist in the process of keeping some of our most vulnerable residents safe from cuckooing and ASB.

Project officers also attend twice monthly multi-agency rough sleeper meetings to look at interventions and support for entrenched rough sleepers. During Covid, all rough sleepers were in accommodation throughout the Borough which presented a number of challenges. However a number of those people managed to maintain their tenancies and are no longer entrenched in the cycle of rough sleeping. These tenants are now supported via the Housing First programme, another multi-agency meeting regularly attended by the Community Safety Team.

## **4. Legal Remedies**

The Community Safety Partnership encourages agencies to use the legal remedies at their disposal when non-legal action is not appropriate, proportionate or fails to resolve the ASB. The various legal options that partners can implement include:-

**Possession (Eviction) Proceedings**

The Council and other Landlords will consider applying to the Court to seek possession of a property where early intervention has been unsuccessful in resolving ASB and/or alternative remedies are not suitable.

**Mandatory Grounds for Possession**

The ASB Crime & Policing Act introduced an absolute ground for possession for secure/fixed term secure tenancies, where ASB or criminality has been proven by a conviction in another court. The purpose of this power is to speed up the possession process in cases where there has already been a criminal or ASB conviction. Landlords no longer have to prove that it is reasonable to grant possession but, instead courts must grant possession if the correct procedure has been followed and at least one of the specified conditions has been met.

**Civil Injunction**

Injunctions can be used to stop/prevent individuals engaging in ASB, aiming to tackle problems before they escalate. Councils, Social Landlords and Police can all apply for an Injunction, which can be used when an individual's behaviour is likely to cause harassment, alarm or distress or is capable of causing nuisance or annoyance. It is issued by the County Court or to under 18s, in the Youth Court. An injunction sets out a clear standard of behaviour and will include prohibitions but can also include positive requirements (e.g. to attend substance misuse meetings) to get the perpetrator to address the underlying causes of their ASB.

Breach of an injunction is not a criminal offence but is dealt with by civil contempt of court, which is punishable by up to two years in prison and/or an unlimited fine. For those aged under 18, breach proceedings are dealt with in youth court and could result in a supervision order, curfew or an activity requirement.

**Criminal Behaviour Order (CBO)**

A CBO can be given to an individual on their conviction for any criminal offence in any criminal court. The order is aimed at tackling the most serious and persistent offenders where their behaviour has brought them before a criminal court (i.e. an anti-social individual commits a criminal offence and is prosecuted). The CBO must clearly define what the offender is not allowed to do as well as what they must do (prohibitions and requirements) and it must also be determined what is required within the CBO to tackle the underlying cause of the behaviour. The penalty for a breach, upon summary conviction, could result in a sentence up to a maximum of 6 months in prison, or up to 5 years on indictment. Under 18s would be called in front of a youth court, which could result in a 2 year detention and training order. West Mercia Police colleagues have applied for a number of CBOs to tackle the behaviour of some of the most persistent offenders in Redditch

**Community Protection Notice (CPN)**

A CPN is intended to deal with on-going problems or nuisances caused by a person aged 16 or over or a business/organisation which negatively affects

the community's quality of life. A CPN can be issued, following a formal warning, if there are reasonable grounds that conduct is having a negative effect on the quality of life of those in a locality, is persistent and unreasonable. Council Officers, Police Officers and Social Landlords with delegated authority from the Council can issue a CPN, which is written notice to the individual demanding they stop the behaviour that is detailed and a requirement to take reasonable steps to stop further incidents in the future.

The CPN can be used against a wide range of perpetrators and can be used to deal with a number of different issues such as noise nuisance, abusive language and behaviour and litter on private land. A breach is a criminal offence which could be prosecuted and a person found guilty of failing to comply with a CPN without reasonable excuse is liable to a fine of up to £2,500, with unlimited fines for a business or organisation.

### **Premises Closure Power**

The Closure Powers allow the police or council to quickly close premises which are being used, or likely to be used, to commit nuisance or disorder. A Closure Notice can be applied for if there is a nuisance to the public and the disorder is related to the premises in question. A Closure Notice is issued out of court and allows closure for up to 48 hours but cannot stop those who live there from accessing premises. A Closure Order can last for up to 6 months and restricts all access to the premises. This can be sought through the Courts once the Closure Notice has been issued.

A Closure Order can be applied for if there is disorderly, offensive or criminal behaviour taking place near the premises which is a serious nuisance to the public. Breach of either is a criminal offence with penalties including:

Notice - Up to 3 months in prison

Order -Up to 6 months in prison; and

Both - An unlimited fine

### **Public Space Protection Order**

The purpose of a PSPO is to stop individuals or groups committing ASB in a public space. The behaviour in question has to be having, or be likely to have, a detrimental effect on the quality of life of those in the locality. It will also be of a persistent nature and be unreasonable.

The restrictions and requirements in the order are set by the Council after consultation with the Police, PCC and other relevant bodies. A PSPO may include preventing certain behaviours or restricting access to certain areas of a public area. A breach is a criminal offence and is enforced by a fixed penalty notice of up to £100 or a further fine upon prosecution. More than one restriction can be added to the same PSPO, meaning that a single order can deal with a wide range of behaviours that prevent people enjoying the use of a public space. Redditch Borough Council is currently reviewing its current PSPOs in line with Home Office statutory guidance.

**5. Recommendation**

That the activity undertaken by the North Worcestershire CSP be noted.

**6. Appendices**

Appendix 1 – ASB Overview: Incidents of ASB 2018 to 2021

**7. Background Papers**

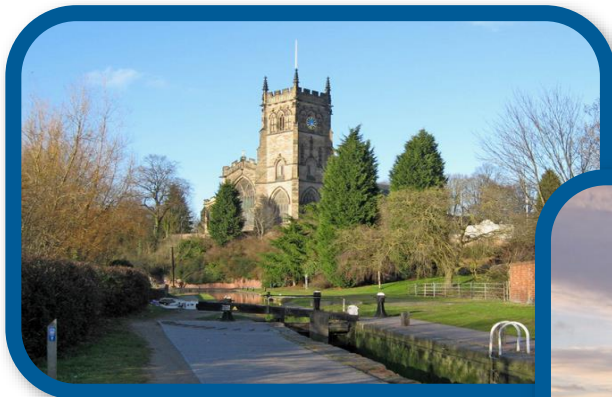
Anti-Social Behaviour, Crime & Policing Act 2014 – Updated Statutory Guidance from the Home Office (Revised 2021): [Anti-social Behaviour, Crime and Policing Act 2014 \(Updated 2021\)](#)

**Officer Contact Details:**

Name: Bev Houghton  
Title: Community Safety Manager  
Tel: 01527 534187  
Email: [bev.houghton@bromsgroveandredditch.gov.uk](mailto:bev.houghton@bromsgroveandredditch.gov.uk)

This page is intentionally left blank

# North Worcestershire Community Safety Partnership



## Incidents of Antisocial Behaviour

<b>Owner:</b>	Redditch Borough Council	<b>Authors:</b>	Amy O'Connor and Charlie Leatherby, Crime Intelligence Researchers
<b>Peer review:</b>	N/A	<b>Quality Assured:</b>	Michelle Wright, Senior Crime Intelligence Analyst
<b>Published:</b>	7 September 2021	<b>URN:</b>	SPI/2021/204
<b>File:</b>	J:\A&SI\SPI West Mercia\Analysis & Insight\Partnership Analyst\1 Community Safety Partnerships\2 North Worcestershire\2021\ASB		

**Handling Instructions:**  
 This document is classified **OFFICIAL** and neither it nor any of the contents may be disseminated further without the prior agreement of the originator.  
 This cover sheet must not be detached from the document to which it refers.  
 This document is the property of West Mercia Police. If found, please call **0300 333 3000** or hand in to your nearest police station.



# Data and Methodology

## Data

### Type

Incidents of Antisocial Behaviour

### Location

North Worcestershire

### Period

1 April 2018 to 31 July 2021

### Source

Incidents – WMP OIS/Safe. WMP Performance Dashboard.

### Extraction

Incidents – BI 4.2

## Caveats

None.

## Methodology

### Incident Types

ASB Incidents were identified by final incident class – AS Environmental, AS Personal and AS Nuisance.

### ASB in Redditch

Incidents of ASB were mapped using Northgate XD and a count recorded for each Redditch ward.



# North Worcestershire and Districts

### 2018 to 2019

There were 53% more incidents of antisocial behaviour recorded across North Worcestershire between 1 April 2020 and 31 March 2021 than during the same period the previous year.

### 2019 to 2020

North Worcestershire All Incidents  
**9935**

Redditch  
**3226**

Bromsgrove  
**2549**

Wyre Forest  
**4160**

**+50%**  
**+1757**

North Worcestershire All Incidents  
**8528**

Redditch  
**2812**

Bromsgrove  
**2207**

Wyre Forest  
**3509**

**+69%**  
**+1514**

Key

Difference between 2019/20 and 2020/21

### 2020 to 2021

All districts recorded an increase in incidents of antisocial behaviour from 2019/2020 to 2020/2021

### 1 April to 31 July 2021

North Worcestershire All Incidents  
**13066**

Redditch  
**4079**

Bromsgrove  
**3721**

Wyre Forest  
**5266**

**+45%**  
**+1267**

North Worcestershire All Incidents  
**3535**

Redditch  
**1159**

Bromsgrove  
**958**

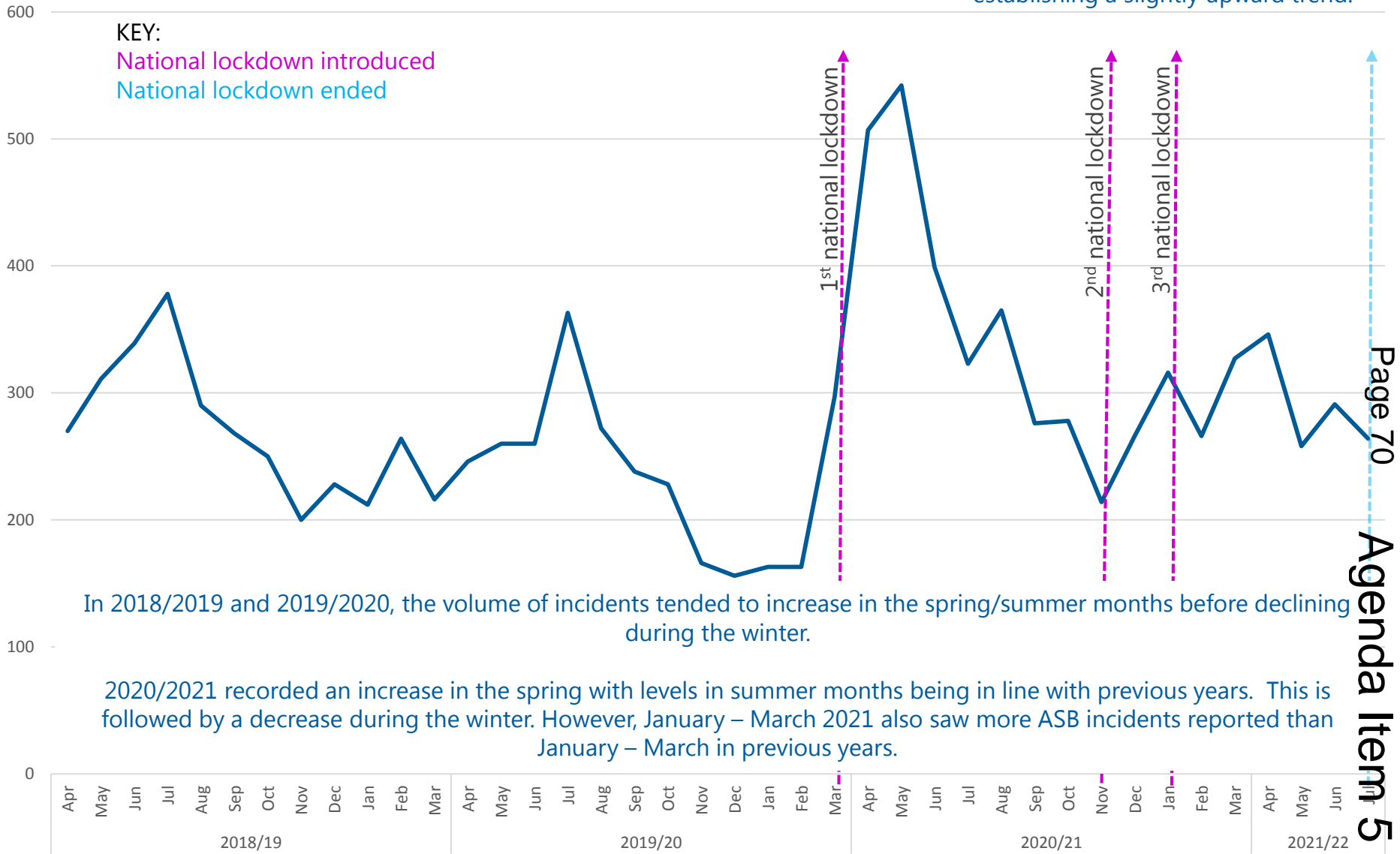
Wyre Forest  
**1418**

WMP OIS/Safe Incidents of ASB, August 2021

# Redditch Seasonal Distribution

## Antisocial Behaviour in Redditch between 1 April 2018 to 31 July 2021

Overall, activity has increased since 2018, establishing a slightly upward trend.



In 2018/2019 and 2019/2020, the volume of incidents tended to increase in the spring/summer months before declining during the winter.

2020/2021 recorded an increase in the spring with levels in summer months being in line with previous years. This is followed by a decrease during the winter. However, January – March 2021 also saw more ASB incidents reported than January – March in previous years.

# Redditch Wards

## Antisocial Behaviour in Redditch between 1 April 2018 to 31 July 2021

Ward	2018 – 2019	2019 - 2020	2020 - 2021	Difference	Percentage Change	1 April to 31 July 2021
Abbey	564	592	555	-37	- 6%	197
Astwood Bank and Feckenham	84	67	136	+69	+ 103%	29
Batchley and Brockhill	310	246	539	+293	+ 119%	180
Central	272	231	434	+203	+ 88%	121
Church Hill	301	338	468	+130	+ 38%	86
Crabbs Cross	107	101	151	+50	+ 50%	26
Greenlands	554	406	551	+145	+ 36%	149
Headless Cross and Oakenshaw	270	255	259	+4	+ 2%	76
Lodge Park	208	126	225	+99	+ 79%	56
Matchborough	206	159	198	+39	+ 25%	79
West	91	69	138	+69	+ 100%	25
Winyates	258	222	402	+180	+ 81%	121
<b>Grand Total</b>	<b>3225</b>	<b>2812</b>	<b>4056</b>	<b>+1244</b>	<b>+44%</b>	<b>1145</b>

Activity increased by 1244 incidents between 2019/2020 and 2020/2021.

The largest increases from 2019/2020 to 2020/2021 were observed in **Batchley and Brockhill, Astwood Bank and Feckenham** and **West** wards.

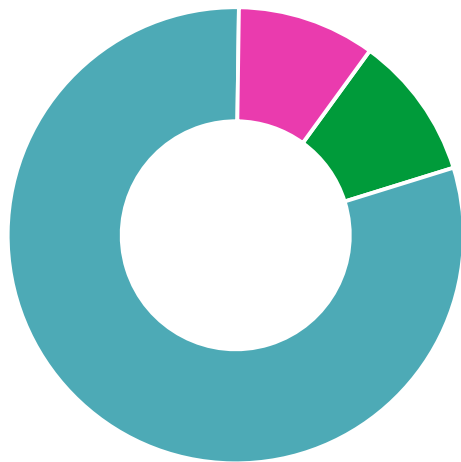
A reduction of incidents of antisocial behaviour was observed between 2019/2020 – 2020/2021 in **Abbey** ward as incidents fell from 592 to 555.

# Redditch Incident Types

Antisocial Behaviour in Redditch between 1 April 2019 to 31 March 2021

Final Incident Class	2019 - 2020	2020 - 2021	Increase or Decrease?	Mean	Mean Percentage
AS Environmental	154	549	+ 395	352	10%
AS Nuisance	2334	3181	+ 847	2758	80%
AS Personal	324	349	+ 25	337	10%

Antisocial Behaviour in Redditch by Final Incident Class



■ AS Environmental ■ AS Nuisance ■ AS Personal

WMP OIS Incidents of ASB, August 2021

**Antisocial Behaviour has three main headings according to the type of behaviour committed:**

- **Personal** - when a person targets a specific individual or group e.g. Trespassing.
- **Nuisance** - when a person causes trouble, annoyance or suffering to a community e.g. Nuisance Neighbours.
- **Environmental** - when a person's actions affect the wider environment, such as public spaces or buildings e.g. Littering.

West Mercia Police, 2021 [www.westmercia.police.uk](http://www.westmercia.police.uk)



This page is intentionally left blank